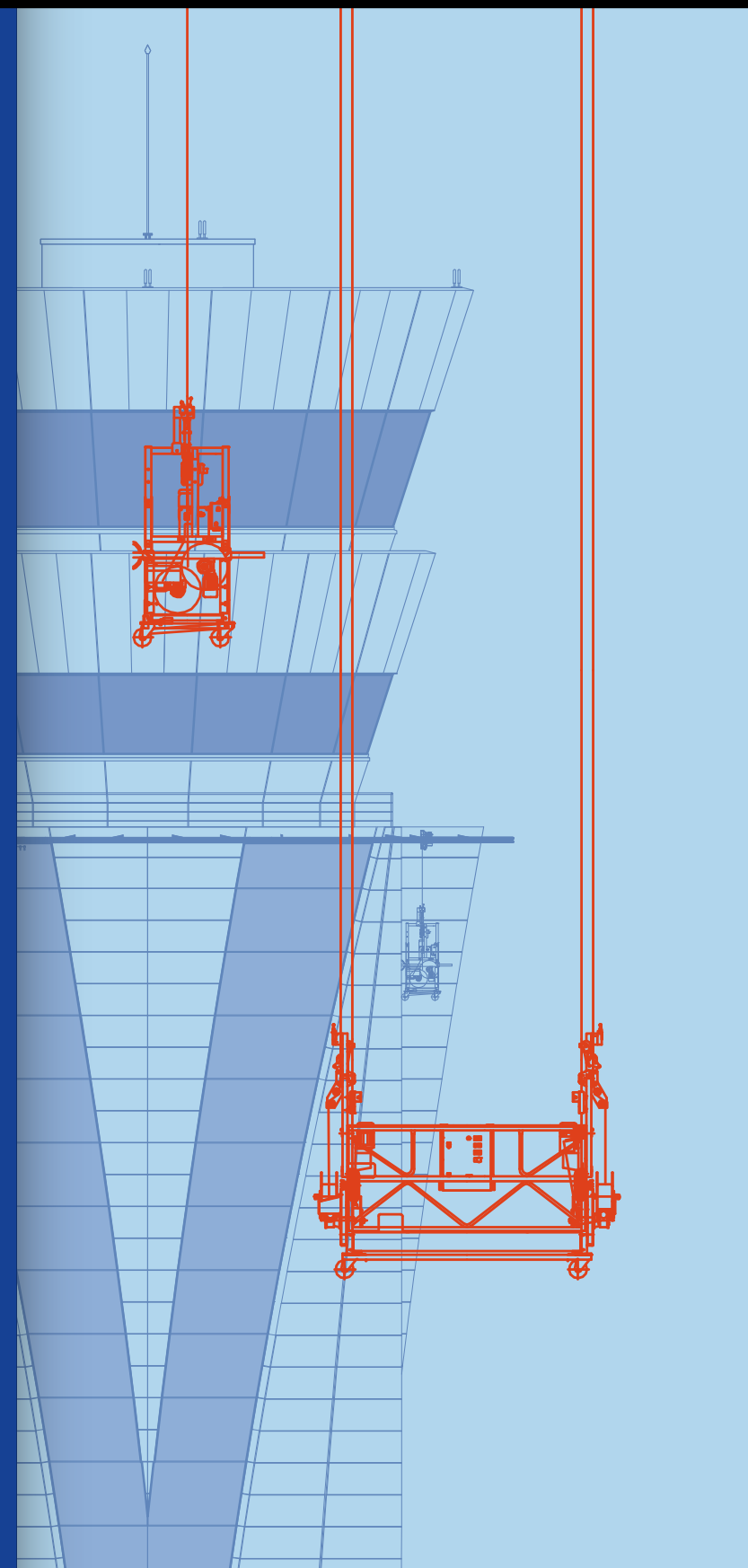




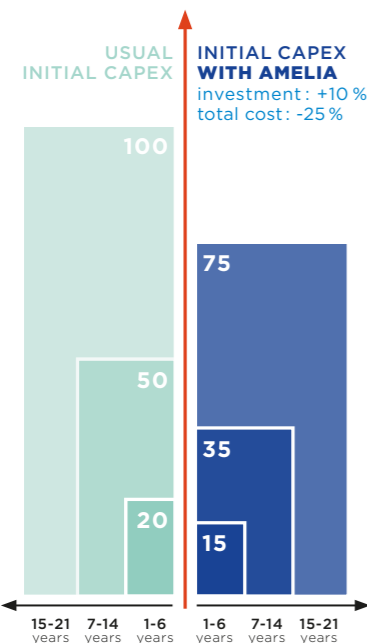
A MEMBER COMPANY  
OF GROUPE ADP



**MAINTENANCE ENGINEERING**

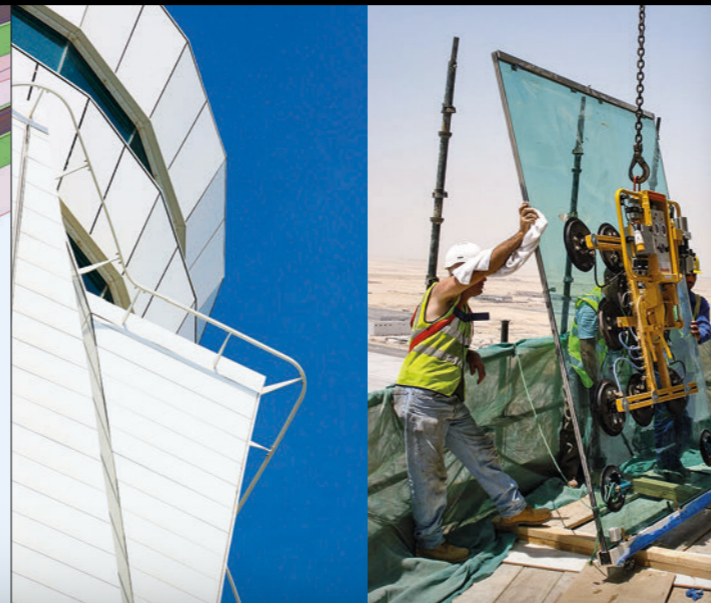
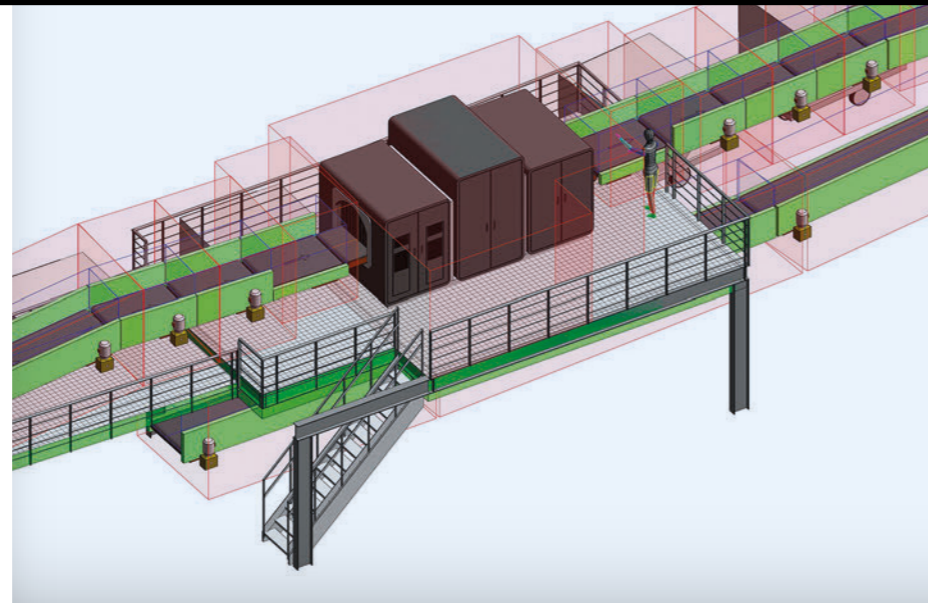
# AIRPORT MAINTENANCE ENGINEERING LIFESPAN IMPROVEMENT ANALYSIS

MAINTENANCE COSTS DURING THE BHS LIFESPAN



## THE SCOPE OF MAINTENANCE ENGINEERING

ANY STEP OF AIRPORT LIFECYCLE / ANY AIRPORT INFRASTRUCTURE



With AMELIA, discover how you can save money with maintenance in the long run by envisioning now what will cause you problems in the future. AMELIA applies maintenance good practices to all phases of Airport life in order to give you a clear picture of your current situation and solutions to prevent from any upcoming challenges.



### AUDIT

Experts visit your airport and analyze your airport history to challenge the existing maintenance processes.

### REVIEW

Lessons learned have been capitalized over years and worldwide with the holistic view. CAPEX investment will take into account OPEX.

### STRATEGY

Indicators (KPI) control leads to the good choice between the performance or means obligation, in-house capitalization or outsourcing... to make long-term plans.

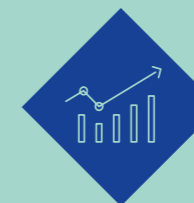
## EXAMPLES OF CLIENTS' CHALLENGES ADDRESSED WITH MAINTENANCE ENGINEERING SERVICE

- Dubai control tower:** Maintainability review. ATCT was designed with peripheral monorail and hoist to enable cleaning of the façade and replacement of the panels.
- Saudi Arabia's general authority of Civil Aviation:** Maintainability review. We developed an integrated ICT security system for 27 airports taking into account consistent back-office process to enable cut down on the maintenance team size and costs.
- Toulouse baggage handling system:** Maintenance audit. Facing technology obsolescence diagnostic, options for possible technology upgrade were presented and spare parts turnover was quantified and scheduled.
- Orly maintenance contracts renewal cost:** Maintenance strategy. Risk of choosing certain providers based on their technical knowledge & experience in airport was evaluated from the budget & cost assessment to the negotiation assistance to reduce maintenance contracts' cost.

## WHAT DISTINGUISHES OUR OFFER

- Our innovative tools as BIM library with maintenance constraints data, 3D virtual reality view with Unity, and link to classical maintenance software tools (CMMS...).
- Maintenance thought from the design phase for an optimized long-term operation of the airport.
- We are designers: upstream and downstream with Holistic approach, and crossed skills.
- Worldwide experience providing a thorough vision of the challenges and needs of airports from all around the world.

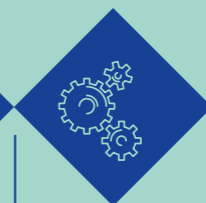
### Performance improvement



Know-how in performance measurement & translation into airport efficiency

Global airport operations view to identify performance opportunities

### Specific technical capabilities



Airport specific BIM process and design with tailor-made libraries

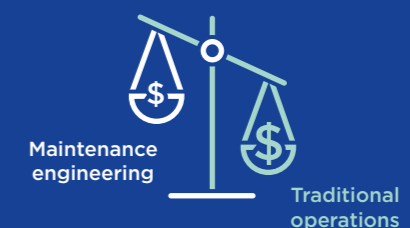
Skilled professionals over all airport operations

### Quality



Worldwide REX data at your service

Tools and methodology to reach your goals  
Survey in innovating predictive maintenance



AMELIA INVESTMENT REDUCES OPEX COSTS AND INCREASES MAINTENABILITY, RELIABILITY & AVAILABILITY



**GROUPE ADP**

---

**CONTACT**

**ADP INGÉNIERIE**  
TUTRINH DUFRENEY

**PHONE** +33 (0)1 49 75 26 30  
**E-MAIL** PARIS@ADP-I.COM

1, RUE DE LA FONDATION  
91200 ATHIS-MONS  
FRANCE

**WWW.ADP-I.COM**